

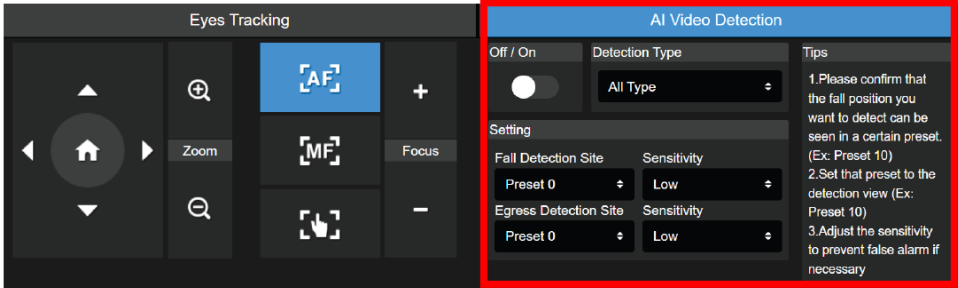


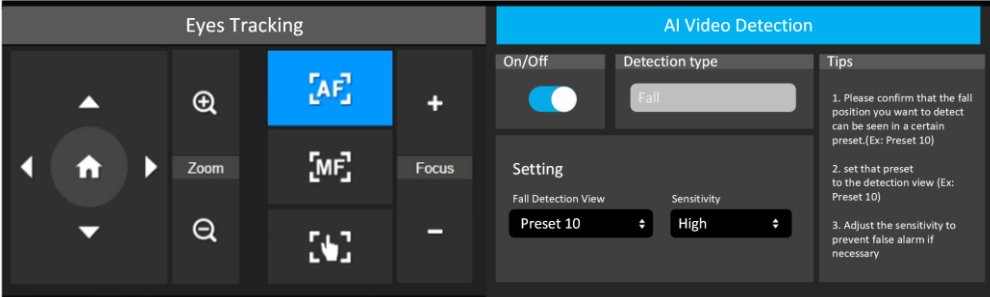
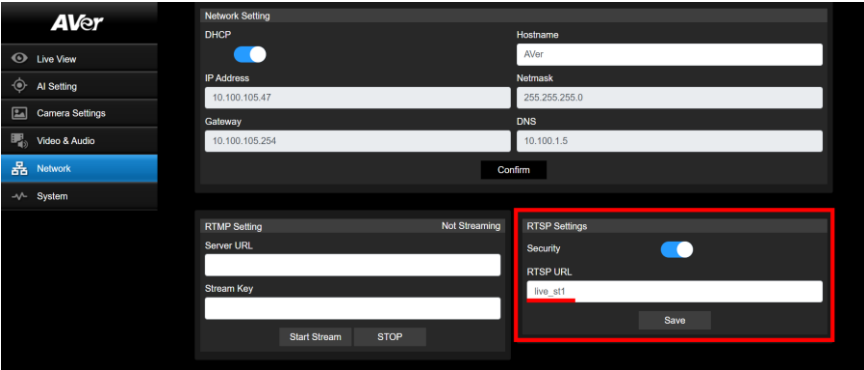
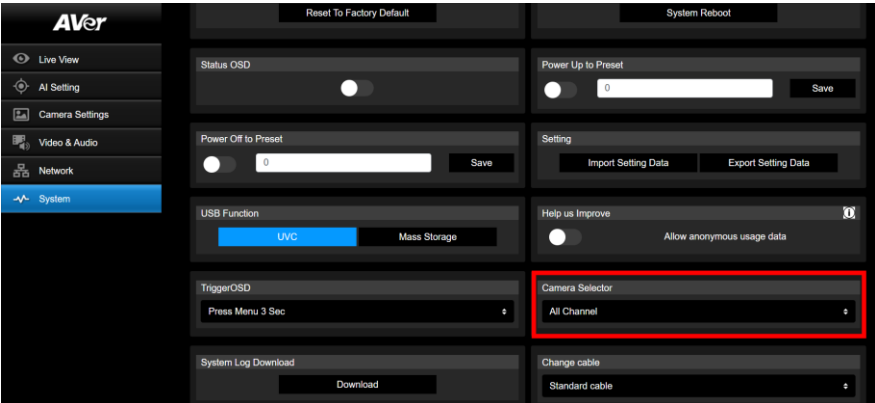
MD120UI Release note

Product : MD120UI

Tips

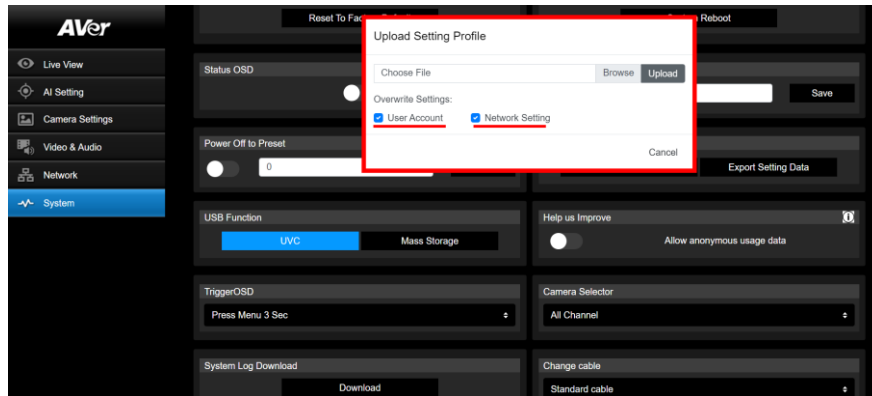
- You need to press and hold [Menu] button for 3 sec on the RC to trigger OSD

FW version	1.1.1013.0
Release date	2024/6/28
New feature	<p>1. Add Egress Detection feature.</p> <p>The setting method is the same as Fall Detection on WEB UI and able to send alarm events.</p> <p>AI Video Detection</p>  <p>2. Passwords need to be more complex to comply with cybersecurity trends (Product Security and Telecommunications Infrastructure Act · PSTI)</p> <div style="border: 1px solid black; padding: 5px; margin: 10px 0;"> <p>Change the username and password before logging in to the web interface.</p> <ul style="list-style-type: none"> Username: Use 1-32 characters. Password: Use 8-32 characters and a combination of uppercase letters, lowercase letters, numbers, and symbols (%+=, -_ ^/ @. ~). The password cannot be the same as the username. </div> <p>** when an existing customer has set Account:1 and Pass:1(which not fit the new rule) , the account password will remain 1,1 after updating the FW. But after set the camera to default, it will be required to comply with the new password rule.</p>
Improvement	<ol style="list-style-type: none"> Fix the issue that may cause camera offline temporary in some use case Change the IR Night Vision setting to [Auto] and Sensitivity [Middle] Some improvement to improve stability
Known issue	-

FW version	1.1.1012.0
Release date	2023/12/25
New feature	<p>3. Support AI Fall Detection</p> <p>WebUI >> AI >> AI Setting >> AI Video Detection</p> <p>when fall been detected in the FOV , MD120UI would trigger an event via network , this event can be received by AVer ViewCare or third-party SW which supported.</p>  <p>4. Support Custom RTSP Settings</p> <p>WebUI >> Network >> RTSP Settings</p> <p>RTSP Sample : <code>rtsp://account:passwd@device_ip/rtsp_url</code></p>  <p>5. Support PELCO-D & PELCO-P Camera Control Protocol (RS-232)</p> <p>6. Now you can set the camera RC channel on WEB UI</p> <p>WebUI >> System >> Camera Selector</p>  <p>7. Support mosaic (pixelated) on face in RTSP for Privacy</p> <p>The camera can now auto detect "Faces" in the view and mosaic on RTSP</p> <p>WebUI >> Video & Audio >> Mosaic on Stream >> Full face</p> <p>8. Support more options to overwrite the setting when Importing Setting Data</p>

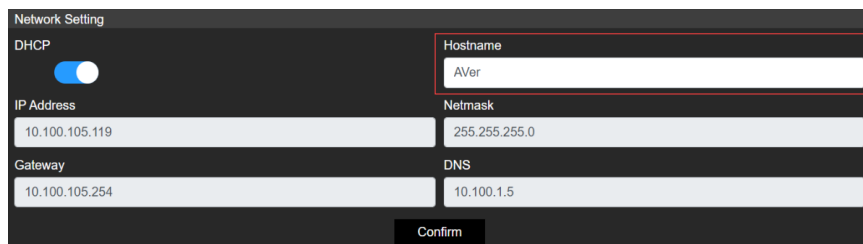
WebUI >> System >> Setting >> Import Setting Data

Check the [User Account] , [Network Setting] if you want to overwrite



9. **Support Hostname on MSFT DNS server for better device management**

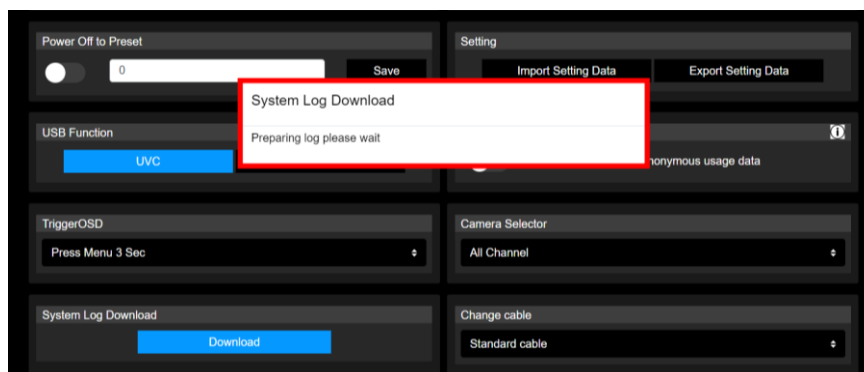
web UI >>> Network >>> Hostname, set the camera hostname and click [Confirm]



Improvement

1. **Remove BETA function(AI Alert Detection)**
2. **Improve AI Tracking stability and accuracy**
3. **Improve AF(Auto Focus) in IR Night Vision**
4. **Fixed UI issue on some browser setting**
5. **Optimize user flow when download log**

A prompt window will pop up when the UI is temporarily frozen due to downloading logs.



Known issue

-

Release note

Product : MD120UI

****You need to press and hold [Menu] button on the RC to trigger OSD**

****AI Alert Detection is a BETA Function**

FW version	1.1.1008.0
Release date	2023/9/1
New feature	1. Camera ops change to improve usability. Camera would be set to AF after enable Eyes Tracking or AI function
Improvement	4. Improve AI Tracking and AF stability and accuracy. 5. Improve AF in IR Night Mode. 6. Improve system stability in long run.
Known issue	1. Under certain browser settings, the proportions of web UI might be distorted (does not affect operation.)